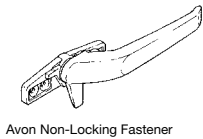




# Avon Non-Locking Fastener for casement and awning windows

## Components



Avon Non-Locking Fastener



Casement Strike

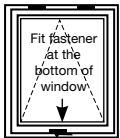


Screw Cover



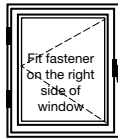
Timber Fixing Screws

## Identify Window Type



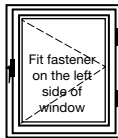
Fit fastener  
at the  
bottom of  
window

Awning  
Windows



Fit fastener  
on the right  
side of  
window

Right Handed  
Casement  
Windows



Fit fastener  
on the left  
side of  
window

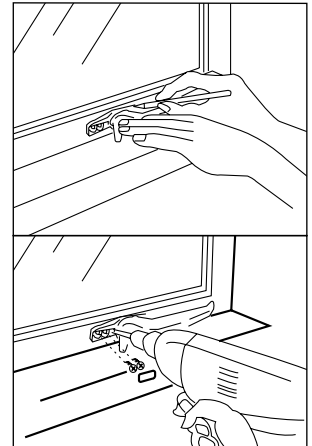
Left Handed  
Casement  
Windows

## Fixing Instructions

1

### Fitting handle

Select position for handle on window allowing 5mm clearance between the bottom of the handle base plate and the window sill. Mark screw positions, drill 3.5mm diameter pilot holes. Fix handle in position.



2

### Fitting strike

Select location for strike to suit position of handle by fully closing window and sliding strike into position. Lift handle and mark screw positions for strike. Drill 3.5mm diameter pilot holes and screw strike in position. Test operation.



*When window is fully closed and Avon is in locked or unlocked mode, window sash should be tightly held against frame.*

